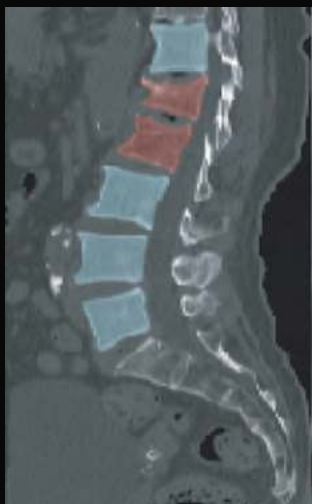


ClariOsteo

AI-Powered Fracture Reporting Solution with Low-Dose CT Screening

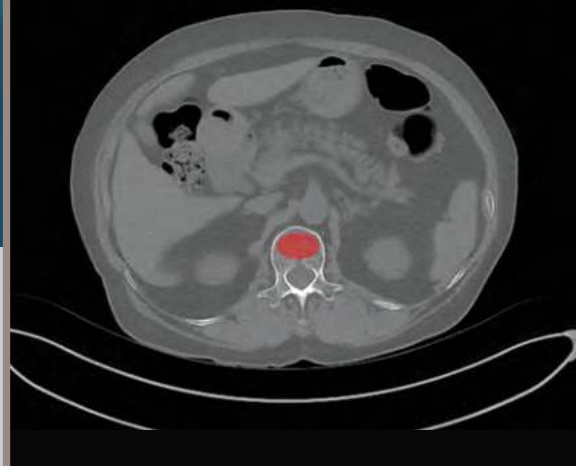
ClariOsteo is an AI-powered precision bone healthcare solution with low-dose CT images. ClariOsteo makes use of existing CT scans and automatically provides analysis reports on spine fracture and osteoporosis risks, which is useful for prevention and treatment management.

FRACTURE DETECTION



BMD MEASUREMENT

BMD 52.09 (mg/cc)



Compatible with any DICOM standard CT and PACS system



Automatically detects spine vertebral compression fracture and measures bone mineral density



Simple installation and fast operation



Helps predict the risk of osteoporosis and vertebral compression fractures

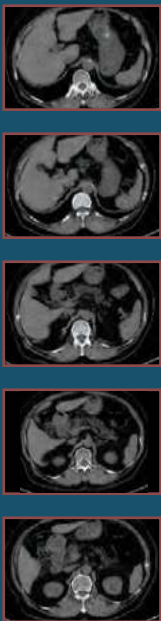
HOW DOES IT WORK?

ClariOsteo is fully compliant with all DICOM standard CTs and PACS systems, allowing easy and seamless integration



VCF DETECTION & BMD MEASUREMENT

Original Existing
Low-Dose Chest CT



DICOM

Sagittal Reformation



Fracture Detection



BMD 52.08 (mg/cc)



- According to the IOF (International Osteoporosis Foundation), 1/3 of women and 1/5 of men more than the age of 50 suffer osteoporotic fractures worldwide.
- The associated socioeconomic burden was \$20 billion in the USA alone in 2015.

Clariπ Inc.
AI MEDICAL IMAGING SOLUTIONS

ClariPi provides innovative solutions to solve the problems in the medical imaging field through the convergence of big data and intelligent image processing technologies. Our solutions help imaging experts make confident decisions with clearer information and more convenient decision guidance.

Headquarters

Phone +82-2-741-3014

Fax +82-2-743-3014

Email claripi@claripi.com

Location Seoul, Republic of Korea

USA Office

Phone +1-248-930-4204

Email harryhp3014@claripi.com

Web www.claripi.com

Location Michigan, USA

